



# SUSTAINABLE WOOD FUEL VALUE CHAINS IN AFRICA: GOVERNANCE, SOCIAL, ECONOMIC AND ECOLOGICAL DIMENSIONS

23-25 November 2021  
GHANA

Wood fuel production systems in the refugee  
settlement of Garoua Boulai council – East  
Cameroon

PAMELA TABI

Research Assistant



RESEARCH  
PROGRAM ON  
Forests, Trees and  
Agroforestry



Global  
Landscapes  
Forum



Resilient  
Landscapes

# CONTENT

- ❖ BACKGROUND
- ❖ PROBLEM STATEMENT
- ❖ OBJECTIVES
- ❖ METHODOLOGY
- ❖ RESULTS
- ❖ KEYS INFORMATIONS
- ❖ CONCLUSIONS





# CONTEXT

## *East – Cameroon landscape*

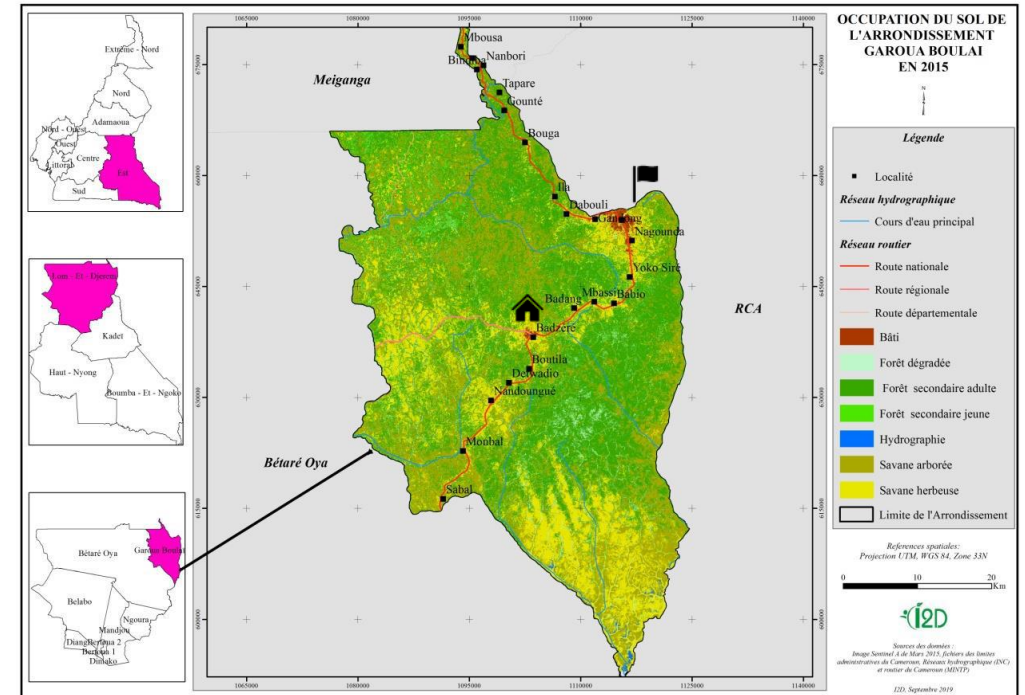
- Cameroon is one of the countries in the Congo basin with a biogeographical diversity between forest and savannah.
- There is more than 300,000 refugees from the Central African Republic located in the East (UNHCR 2019).
- The landscape in East-Cameroon offers multiple activities like Agriculture, Livestock, Mining, Fishery and Sawing : this landscape is “**multifunctional**”.
- East-Cameroon landscape is characterized in the South by tropical humid forest to its North part by wooded savannah.
- In Garoua Boulai savannah are dominants with small plots of secondary forests. The arrival of refugees in 2014 has considerably increased the pressure on wood resource in that ecosystem.



# CONTEXT

## *Garoua Boulai landscape East - Cameroon*

Garoua Boulai locality is composed of 18 villages dispatched in almost 100km along the main national road linking Bertoua to Ngaoundéré (the refugee camp in Gado Badzere included).



**MOMBAL - SABAL – NANDOUNGUE - GADO BADZERE - MBASSI GBABIO - ABO BOUTILA -  
BADAN - YOKO SIRE - DABOLE - GANDONG ILLA - NAMBOURI - TAPARE - MBONGA -  
KOMBOUL - MBOUSSA**



# PROBLEM STATEMENT

Despite the existing information or data on wood fuel in Sub-Saharan Africa, those related to Central Africa are sparse. Moreover, Central Africa for long has been neglected in undertaking such studies.

In Cameroon, there is a need for a systematic approach to analyzing wood fuel value chain dynamics that considers multiple functions of forest-agricultural landscapes and outcomes for livelihoods and forest governance.

The biggest refugee camp in East-Cameroon is in Garoua Boulai locality (in Gado Badzere village) and is a good case study because the ecosystem is dominated by wooded savanna with few forest plots. Moreover, with the flow of migrants, the pressure to get the resource became higher.







# GENERAL OBJECTIVE

This study aims to provide knowledge as well as solutions on wood fuel production systems in a multifunctional landscape in Garoua Boulai locality in the Eastern Cameroon.



# RESEARCH QUESTION

What are the main wood fuel production systems in the refugee sites of Garoua Boulai locality in Eastern Cameroon?



# SUB RESEACRH QUESTIONS

- 1) Where do people use to collect firewood for they daily needs?
- 2) How many travels people do to collect firewood during a week?
- 3) How is composed the value chain of wood fuel in Garoua Boulai landscape?
- 4) What are the land uses existing in this landscape?
- 5) What are the proposed solutions from the local communities?



# METHODOLOGY



## Focus group discussion

- Men
- Women



## Measurements of bundles of firewood

- 6 villages



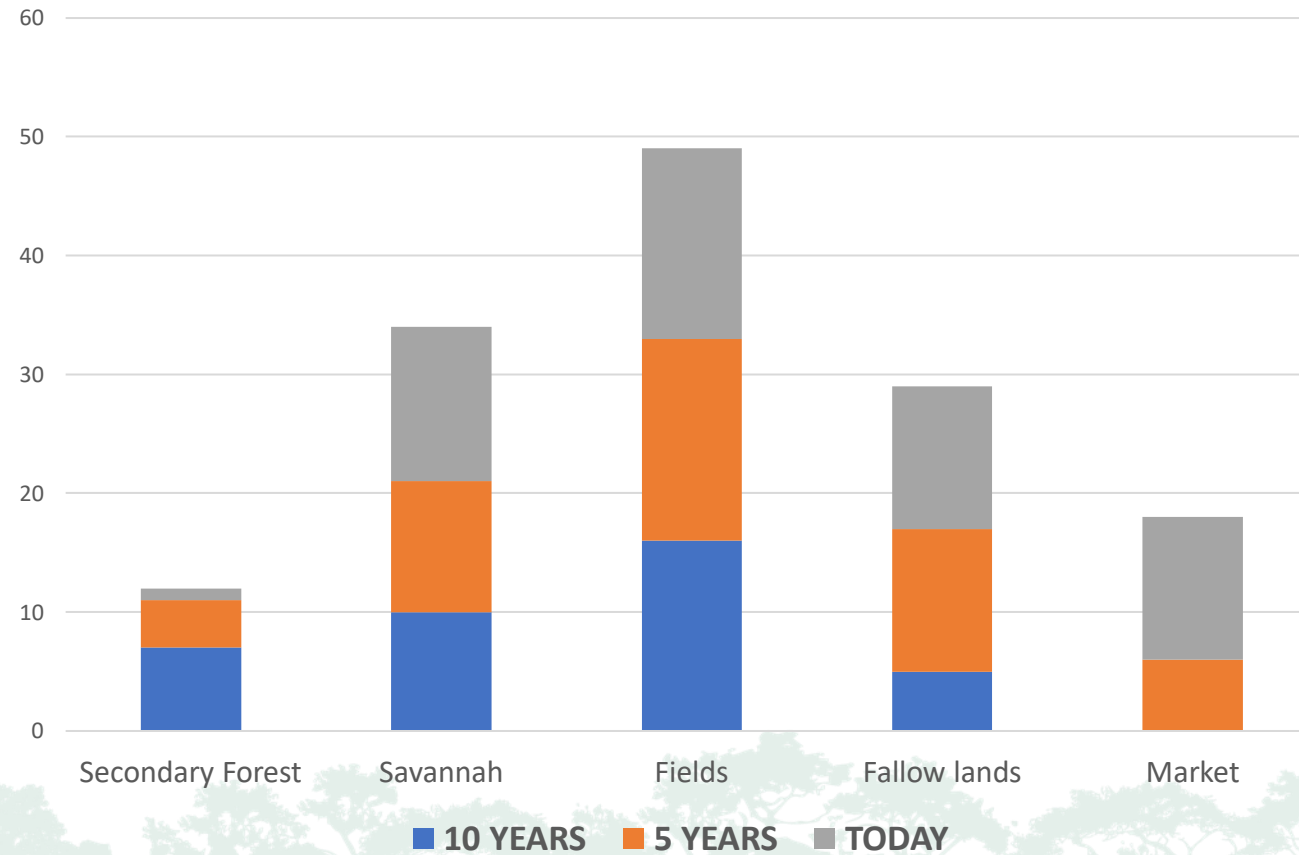
## Data analysis

- Triangulation
- Excel



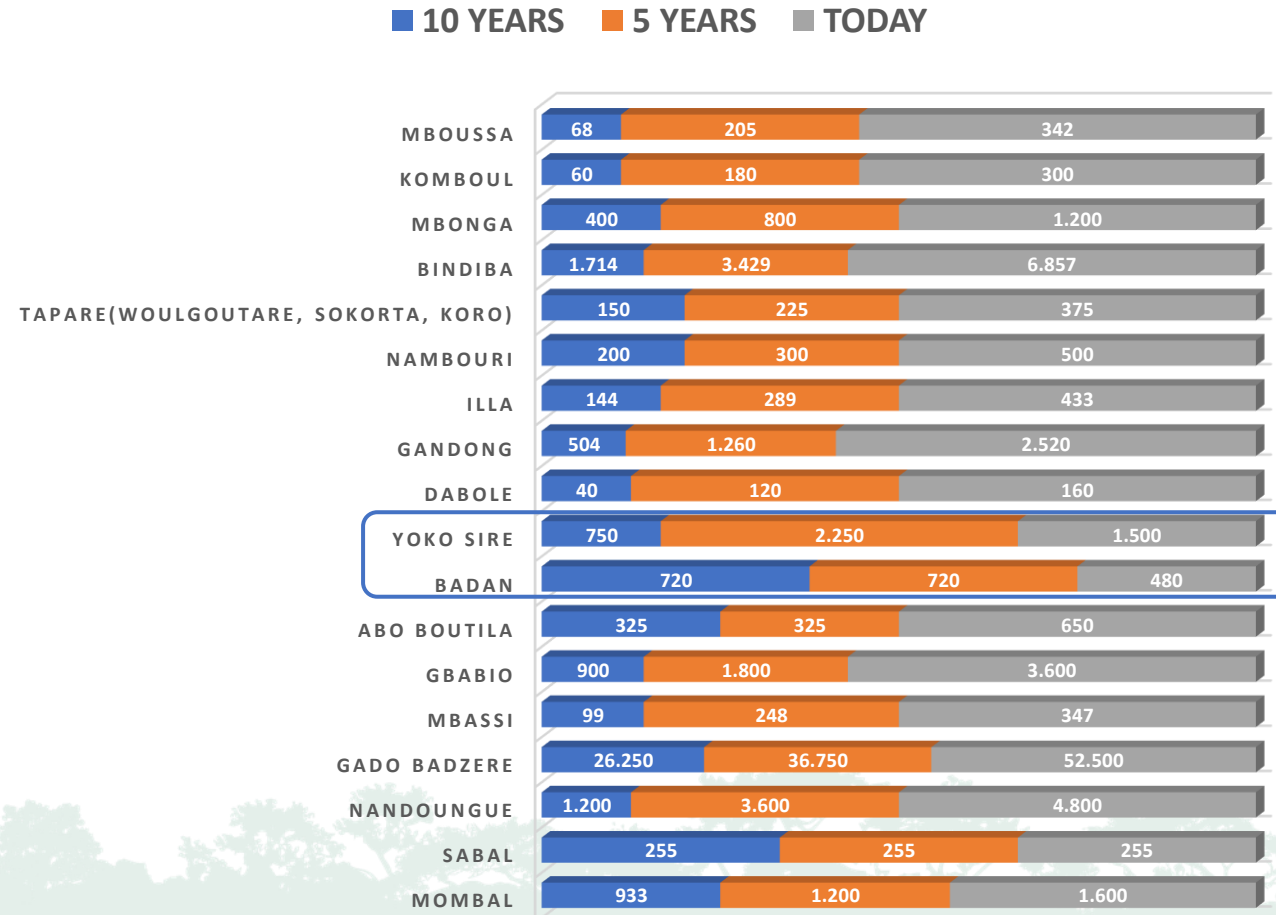
# RESULTS (1/5)

- Main places where people use to collect firewood



# RESULTS (2/5)

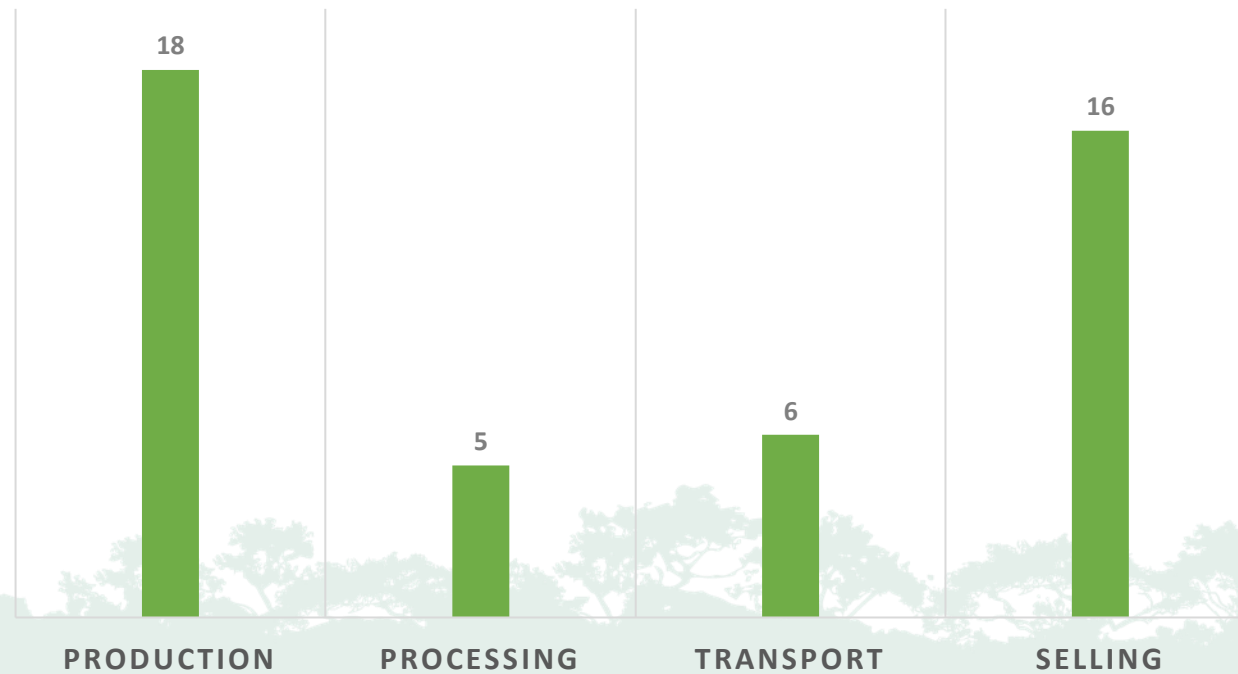
- Weekly travels for households to collect firewood





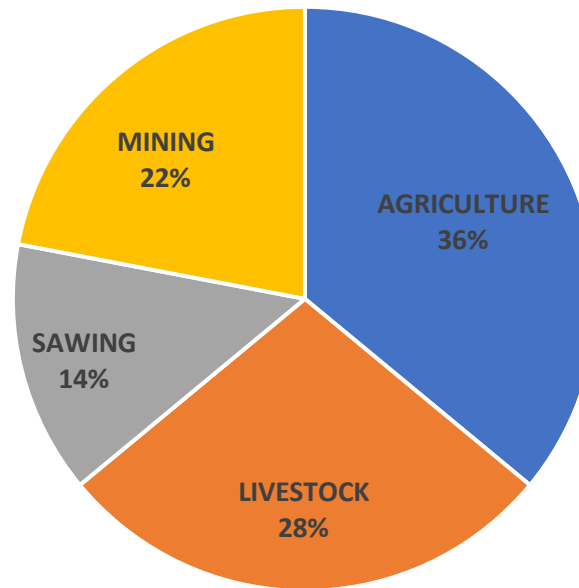
# RESULTS (3/5)

- Value Chain of Wood fuel in Garoua Boulai landscape



# RESULTS (4/5)

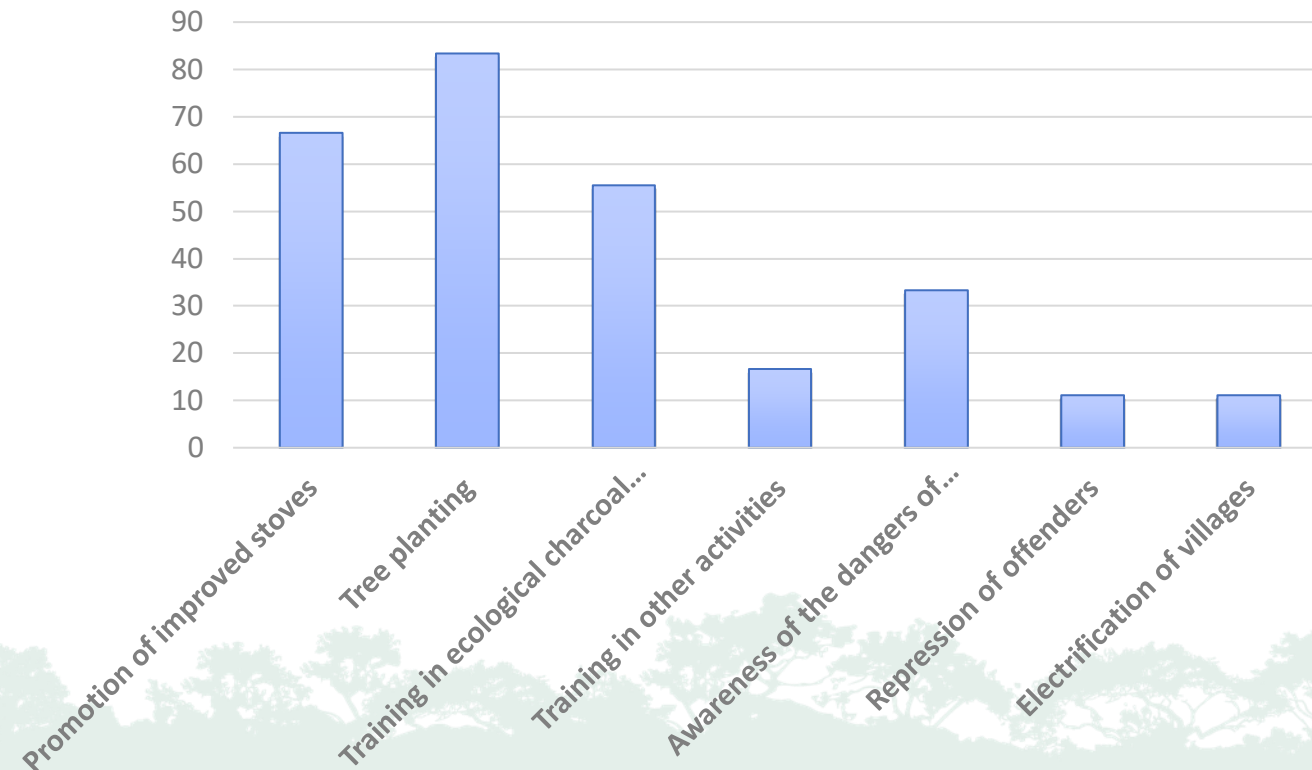
- The land uses existing in the landscape of Garoua Boulai





# RESULTS (5/5)

- Proposed solutions from the local communities to improve the wood fuel value chain in the landscape of Garoua boulai



# CONCLUSION

- Firewood is the main type of wood used as source for energy in rural area for cooking and heating, considering that for lightening, people use torches or solar torches.
- Only few villages started producing charcoal but with the risk that these activity would be interrupted by the local authorities of the council.
- A big amount of firewood is sold near the road. The dry season (from November to January) is the best period to get firewood.
- Collection and selling firewood remain an individual activity. People are not organized into a cooperative for this purpose
- GML project conducted by CIFOR launched activities focused on reforestation and improving cooking systems in the landscape of Garoua Boulai and the communities that have been involved appreciated it and are expecting positive outcomes.







**THANK YOU FOR  
YOUR  
ATTENTION!**

